



# *Product catalog*

May 2010

**LEXYCOM TECHNOLOGIES, INC**

Phone (303) 774-7822  
E-mail: [info@lexycominc.com](mailto:info@lexycominc.com)  
[www.lexycominc.com](http://www.lexycominc.com)

*Where any application finds its wireless solution*



# TELION 1300 TRANSCIVER

## MILITARY USE



**Telion-1300**  
fully digital, spread spectrum  
software defined radio, board level

- Fully Digital Software Defined Radio Transceiver
- Capable of supporting virtually any type of waveform
- Provides ARDS-compliant Participant functionality, Push-to-Talk (various rates up to 1000 Slots/sec)
- Can be powered up from as low as 3.6VDC power supply
- High Data Rate (capable of up to 6.5 Mbps)
- Variety of user data interfaces of the same hardware

## ELECTRO MECHANICAL

- Input voltage range: 3.6 ... 36 VDC
- Operating temperature range: -40...+80 deg C
- Humidity: up to 95%, non-condensing
- RF connector: MCX
- Board level transceiver provides 30-pin data connector
- Data Interfaces: Serial, SDLC, Ethernet
- Dimensions (board level) 3.18" x 2.89" x 0.47", fits PC/104 8/16-bit carrier boards

## LEXYCOM TECHNOLOGIES, INC

Phone (303) 774-7822  
E-mail: info@lexycominc.com  
www.lexycominc.com

*Where any application finds its wireless solution*

# TELION 1300 TRANSCIVER



## CHARACTERISTICS

Frequency band of operation	1350...1390 MHz, 25 kHz spacing
RF channel throughput	Defined by the loaded software: 1.2 Mb/s for ARDS waveform; Up to 1.2 Mb/s otherwise, capable of 6.5 Mbps.
Signal OC-BW	Dependent upon the type of modulation and RF bit rate selected.
Modulation types supported	SOQPSK (ARDS-compliant), MSK, GMSK, FSK, capable of BPSK, QPSK.
Error correction	Convolutional code ( $r=1/2$ ), Viterbi soft decision, $k=7$ .
Error detection	Transceiver can support user-defined CRC protocol. Several standard protocols are supported CRC16 (default) CRC24 (MIL-STD 188-184), CRC32
Interleaving/De-interleaving	matrix Interleaver/De-Interleaver
Network topologies supported	TDMA, Push-to-Talk, Point-to-Point, Point-to-Multipoint, TDMA (including Masterless TDMA)
RF Network security	The following parameters are user selectable; Hop rate as fast as 100,000 per second; Fast frequency hopping option; Number of data bytes within each RF packet; Deviation/modulation index for the RF Xmit; Hop table up to 128 frequency channels long; Each frequency channel is user selectable.
RF channel data encryption	Available cryptography: AES, DES, and 3DES algorithms. User-defined security keys.
Dimensions (board level)	3.18'' x 2.89'' x 0.47''.

**LEXYCOM TECHNOLOGIES, INC**

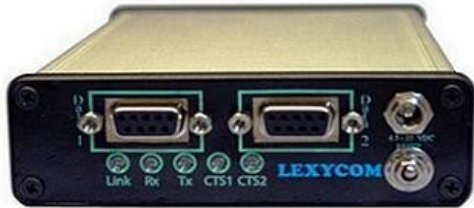
Phone (303) 774-7822  
E-mail: [info@lexycominc.com](mailto:info@lexycominc.com)  
[www.lexycominc.com](http://www.lexycominc.com)

*Where any application finds its wireless solution*



# TIAMIS-800 TRANSCIVER

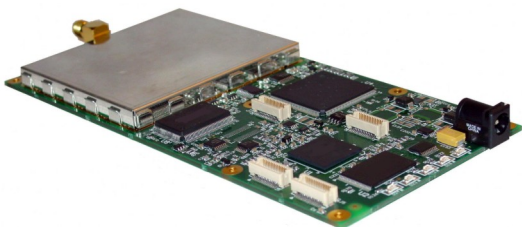
## FOR SERIAL INTERFACES



**Tiamis-800, software defined radio transceiver, extruded aluminum enclosure**

- Fully digital, software defined radio transceiver
- Supports almost any type of RF channel waveform (FM, PM, or AM); On-board encryption engine, randomizer, and encoder; If needed, can be used with external up/down frequency converter or power amplifier to meet CDL requirements
- RF channel throughput adjustable according to the application needs from 2.4 kb/s to 1 Mb/s; Wide selection of data interfaces
- Spreading Spectrum by Frequency Hopping (hops as fast as 100,000 times/second), or Direct Sequence, or Hybrid
- User selectable frequency channels of operation with resolution of 0.25 kHz; Operation Frequency Band is 824-960 MHz providing operation in almost any part of the world

## RELATED PRODUCTS



**Board level Tiamis-800 software defined radio transceiver**

- Lexycom Configuration and Firmware Upgrade programs
- Interchangeable data interface
- Serial data options: Option 1100, 1102, 1103
- Ethernet data options: Option 1200
- Board level
- Antennas
- Cables

**LEXYCOM TECHNOLOGIES, INC**

Phone (303) 774-7822  
E-mail: info@lexycominc.com  
www.lexycominc.com

*Where any application finds its wireless solution*

# TIAMIS-800 TRANSCIVER



## CHARACTERISTICS

Frequency band of operation	824...960 MHz
RF channel throughput	User selectable: from 1200 b/s to 256 kb/s for 2-level modulation schemas; up to 1 MB/s for more complex modulation types.
Network topologies supported	Point-to-Point, Point-to-Multipoint, TDMA, Peer-to-Peer.
RF Network security	In addition to the proprietary network protocol that is used, the following parameters of the transceiver are user selectable, providing required network security: Hop Rate as fast as 100,000 times per second; Fast frequency hopping option; Hop table up to 128 frequency channels long. Each frequency channel is user selectable with 0.25 kHz resolution.
RF channel data encryption	Available cryptography: AES, DES, and 3DES algorithms. User-defined security keys.
Output power	Programmable with 1 dB steps, up to 1 Watt.
Sensitivity	-109 dBm @ BER $10^{-6}$ , RF channel bit rate of 130 kb/s, 2 level FSK
Input voltage range	4.5...25 VDC.
Operating temperature range	-35 ... + 80 deg C.
Humidity	Up to 90%, non-condensing.
RF connector	SMA
Data interfaces supported	With the appropriate interface board, the transceiver is capable of supporting the following data interfaces: RS232, RS422, RS485, USB, I2C, SPI, Ethernet, and Digital I/Os.
Dimensions (board level)	3'' x 6.45'' x 0.5''.

**LEXYCOM TECHNOLOGIES, INC**

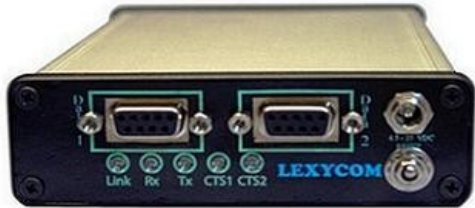
Phone (303) 774-7822  
E-mail: [info@lexycominc.com](mailto:info@lexycominc.com)  
[www.lexycominc.com](http://www.lexycominc.com)

*Where any application finds its wireless solution*



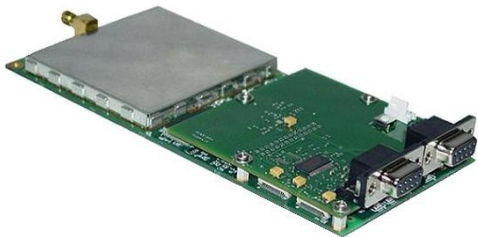
# TIAMIS-800L TRANSCIVER

## FOR SERIAL INTERFACES



**Tiamis-800L, software defined radio transceiver, extruded aluminum enclosure**

- **Frequency band 902-928 MHz**
- **Network Topologies: Point-to-Point, Point-to-Multipoint, TDMA, Peer-to-Peer**
- **Single Radio Repeater**
- **Data Encryption: AES, DES, and 3DES**
- **RF Channel throughput 130 kb/s**
- **On board firmware bank**
- **Selectable hop tables**
- **User Interchangeable data interface**
- **Output Power up to 1 Watt**
- **Minimum operating voltage is as low as 4.5 VDC**



**Tiamis-800L, software defined, board level, radio transceiver when equipped with *Option 1100, Option 1102, or Option 1103.***

## RELATED PRODUCTS

- **Interchangeable data interface**
- **Serial data options: Option 1100, 1102, 1103**
- **Ethernet data options: Option 1200**
- **Board level**
- **Accessories**
- **Antennas**
- **Cables**

# LEXYCOM TECHNOLOGIES, INC

Phone (303) 774-7822  
E-mail: info@lexycominc.com  
www.lexycominc.com

*Where any application finds its wireless solution*

# TIAMIS-800L TRANSCIVER



## CHARACTERISTICS

Frequency band of operation	902...928 MHz
RF channel throughput	130 kb/s
Network topologies supported	Point-to-Point, Point-to-Multipoint, TDMA, Peer-to-Peer
RF Network security	In addition to the proprietary network protocol that is used, the following parameters of the transceiver are user selectable, providing required network security: Hop table up to 128 frequency channels long. Number of data bytes in each RF packet
RF channel data encryption	Available cryptography: AES, DES, and 3DES algorithms. User-defined security keys.
Output power	Programmable with 1 dB steps, up to 1 Watt.
Sensitivity	-110 dBm @ BER $10^{-6}$ , RF channel bit rate of 130 kb/s, 2 level FSK
Input voltage range	4.5...25 VDC.
Operating temperature range	-35 ... + 80 deg C.
Humidity	Up to 90%, non-condensing.
RF connector	SMA
Data interfaces supported	With the appropriate interface board, the transceiver is capable of supporting the following data interfaces: RS232, RS422, RS485, USB, I2C, SPI, Ethernet, and Digital I/Os.
Dimensions (board level)	3'' x 6.45'' x 0.5''.

**LEXYCOM TECHNOLOGIES, INC**

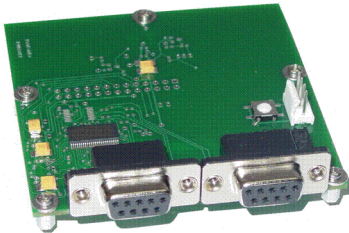
Phone (303) 774-7822  
E-mail: [info@lexycominc.com](mailto:info@lexycominc.com)  
[www.lexycominc.com](http://www.lexycominc.com)

*Where any application finds its wireless solution*



## OPTION 1100

### FOR SERIAL INTERFACES



**Option 1100 - single RS232 and diagnostics port interface board**



**Tiamis-800 transceiver with Option 1100 - interface board**

- Supports up to two independent RS232 data channels
- Supports the Lexycom proprietary “Intelligent Interface Type Recognition” protocol
- Supports Setup/Diagnostics mode and the “Firmware Banks Exchange” algorithm
- User Interchangeable
- Attaches/piggybacks to the Tiamis-800 series
- Minimum operating voltage is as low as 4.5 VDC
- +/- 15 kV ESD protection (using HBM)
- Equipped with the push-button setup switch
- Sold separately or as a complete assembly with the Tiamis-800 series transceiver

### INTERFACE OPTIONS

- Option 1100 - RS232 Interface, single channel, for use with board level product
- Option 11E0 - RS232 Interface, single channel, for use with enclosure product
- Option 1104 - RS232 Interface, dual channel, includes two RS232 channels, for use with board level product
- Option 11E4 - RS232 Interface, dual channel, includes two RS232 channels, for use with enclosure product

**LEXYCOM TECHNOLOGIES, INC**

Phone (303) 774-7822  
E-mail: [info@lexycominc.com](mailto:info@lexycominc.com)  
[www.lexycominc.com](http://www.lexycominc.com)

*Where any application finds its wireless solution*

# OPTION 1100



## CHARACTERISTICS

Data interface supported	Two independent RS232 data channels
Connectors	Data ports - DB-9 Power - 4 pin, 0.1" spacing straight connector
Setup/Diagnostics support	Data2 port can be used as the setup/diagnostics port
Firmware Banks exchange protocol support	Yes
Support of the "Intelligent Interface Type Recognition" protocol	Yes
Data rates supported	Up to 115.2 kb/s
Data format supported	5, 6, 7, and 8 Data Bits Even, Odd, and None Parity 1, 1.5, and 2 Stop Bits
Data port diagnostics support	Local or remote loops are supported
ESD protection	+/-15 kV using HBM
Flow control	CTS line indicates the status of the data buffer
Additional functions	Equipped with a push-button Setup switch to force the transceiver into the setup mode.
Mechanical dimensions	3(W) x 3.41(L) x 0.625(H) inches
Means of connecting to the Tiamis-800 transceiver	Uses five #2 hardware screws with aluminum standoffs (supplied with the interface board).
Operating voltage range	4.5...25 VDC
Operating temperature range	-35 ... + 80 deg C
Humidity	Up to 90%, non-condensing

**LEXYCOM TECHNOLOGIES, INC**

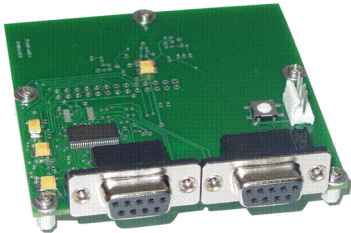
Phone (303) 774-7822  
E-mail: [info@lexycominc.com](mailto:info@lexycominc.com)  
[www.lexycominc.com](http://www.lexycominc.com)

*Where any application finds its wireless solution*



## OPTION 1102

### FOR SERIAL INTERFACES



***Option 1102 - single RS422 and diagnostics port interface board***



***Tiamis-800 transceiver with Option 1102 - interface board***

- **Support one RS422 data channel and one RS232 data/diagnostics channel**
- **Supports the Lexycom proprietary “Intelligent Interface Type Recognition” protocol**
- **Supports Setup/Diagnostics mode and the “Firmware Banks Exchange” algorithm**
- **User Interchangeable**
- **Attaches/piggybacks to the Tiamis-800**
- **Minimum operating voltage is as low as 4.5 VDC**
- **Equipped with the push-button setup switch**
- **Sold separately or as a complete assembly with the Tiamis-800 transceiver**

### INTERFACE OPTIONS

- **Option 1102 - RS422 Interface, single channel, for use with board level product**
- **Option 11E2 - RS422 Interface, single channel, for use with enclosure product**
- **Option 1106 - RS422 Interface, dual channel, includes one RS232 channel, for use with board level product**
- **Option 11E6 - RS422 Interface, dual channel, includes one RS232 channel, for use with enclosure product**

**LEXYCOM TECHNOLOGIES, INC**

Phone (303) 774-7822  
E-mail: [info@lexycominc.com](mailto:info@lexycominc.com)  
[www.lexycominc.com](http://www.lexycominc.com)

*Where any application finds its wireless solution*

## OPTION 1102



### CHARACTERISTICS

Data interface supported	One RS422 data channel and one additional (optional) RS232 data channel
Connectors	Data port and diagnostics port - DB-9 Power - 4 pin, 0.1" spacing straight connector
Setup/Diagnostics support	Dedicated diagnostics port
Firmware Banks exchange protocol support	Yes
Support of the "Intelligent Interface Type Recognition" protocol	Yes
Data rates supported	Up to 115.2 kb/s
Additional functions	Equipped with a push-button Setup switch to force the transceiver into the setup mode.
Mechanical dimensions	3(W) x 3.41(L) x 0.625(H) inches
Means of connecting to the Tiamis-800 transceiver	Uses five #2 hardware screws with aluminum standoffs (supplied with the interface board).
Operating voltage range	4.5...25 VDC
Operating temperature range	-35 ... + 80 deg C
Humidity	Up to 90%, non-condensing

**LEXYCOM TECHNOLOGIES, INC**

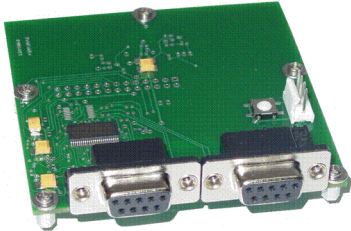
Phone (303) 774-7822  
E-mail: [info@lexycominc.com](mailto:info@lexycominc.com)  
[www.lexycominc.com](http://www.lexycominc.com)

*Where any application finds its wireless solution*



## OPTION 1103

### FOR SERIAL INTERFACES



**Option 1103 - single RS485 and diagnostics port interface board**



**Tiamis-800 transceiver with Option 1103 - interface board**

- Supports one RS485 data channel and one RS232 data/diagnostics channel
- Supports the Lexycom proprietary “Intelligent Interface Type Recognition” protocol
- Supports Setup/Diagnostics mode and the “Firmware Banks Exchange” algorithm
- User Interchangeable
- Attaches/piggybacks to the Tiamis-800
- Minimum operating voltage is as low as 4.5 VDC
- Equipped with the push-button setup switch
- Sold separately or as a complete assembly with the Tiamis-800 transceiver

### INTERFACE OPTIONS

- Option 1103 - RS485 Interface, single channel, for use with board level product
- Option 11E3 - RS485 Interface, single channel, for use with enclosure product
- Option 1107 - RS485 Interface, dual channel, includes one RS232 channel, for use with board level product
- Option 11E7 - RS485 Interface, dual channel, includes one RS232 channel, for use with enclosure product

**LEXYCOM TECHNOLOGIES, INC**

Phone (303) 774-7822  
E-mail: [info@lexycominc.com](mailto:info@lexycominc.com)  
[www.lexycominc.com](http://www.lexycominc.com)

*Where any application finds its wireless solution*

## OPTION 1103



### CHARACTERISTICS

Data interface supported	One RS485 data channel and one additional (optional) RS232 data channel
Connectors	Data port and diagnostics port - DB-9 Power - 4 pin, 0.1" spacing straight connector
Setup/Diagnostics support	Dedicated diagnostics port
Firmware Banks exchange protocol support	Yes
Support of the "Intelligent Interface Type Recognition" protocol	Yes
Data rates supported	Up to 115.2 kb/s
Additional functions	Equipped with a push-button Setup switch to force the transceiver into the setup mode.
Mechanical dimensions	3(W) x 3.41(L) x 0.625(H) inches
Means of connecting to the Tiamis-800 transceiver	Uses five #2 hardware screws with aluminum standoffs (supplied with the interface board).
Operating voltage range	4.5...25 VDC
Operating temperature range	-35 ... + 80 deg C
Humidity	Up to 90%, non-condensing

**LEXYCOM TECHNOLOGIES, INC**

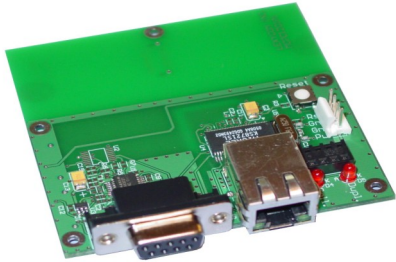
Phone (303) 774-7822  
E-mail: [info@lexycominc.com](mailto:info@lexycominc.com)  
[www.lexycominc.com](http://www.lexycominc.com)

*Where any application finds its wireless solution*



# OPTION 1108

## ETHERNET - SERIAL SERVER



**Option 1108- Ethernet /Serial Server and diagnostics port interface board**



**Tiamis-800 transceiver with Option 1108 - interface board**

- Legacy serial devices are now IP addressable with the Ethernet/Serial server
- Provides Ethernet connectivity for RS232, RS422, and RS485 equipment
- Ethernet-to-serial server handles all required protocol conversion
- Supports the Lexycom proprietary “Intelligent Interface Type Recognition” protocol
- Supports Setup/Diagnostics mode and the “Firmware Banks Exchange” algorithm
- User Interchangeable, piggybacks to the Tiamis-800
- Sold separately or as a complete assembly with the Tiamis-800L transceiver

## INTERFACE OPTIONS

- Option 1108 - Ethernet Serial Server interface, single channel, for use with board level product
- Option 11E8 - Ethernet Serial Server interface, single channel, for use with enclosure product
- Option 110C - Ethernet Serial Server interface, dual channel, includes one RS232 channel, for use with board level product
- Option 11EC - Ethernet Serial Server Interface, dual channel, includes one RS232 channel, for use with enclosure product

# LEXYCOM TECHNOLOGIES, INC

Phone (303) 774-7822  
 E-mail: [info@lexycominc.com](mailto:info@lexycominc.com)  
[www.lexycominc.com](http://www.lexycominc.com)

*Where any application finds its wireless solution*

# OPTION 1108



## CHARACTERISTICS

Data interface supported	10Base-T/100 Base-TX Ethernet
Connectors	RJ45 for Ethernet port; DB-9 for diagnostics port; Power - 4 pin, 0.1" spacing straight connector
Setup/Diagnostics support	Dedicated diagnostics port
Firmware Banks exchange protocol support	Yes
Support of the "Intelligent Interface Type Recognition" protocol	Yes
Data rates supported	Up to 115.2 kb/s
Additional functions	Auto negotiates full/half duplex, 10Base-T or 100 Base-T speed.  Supports UDP (datagrams 0x00, 0x01, 0x03, 0x05, and 0xFF) or TCP packets. Programmable port number and serial port settings.  Supports telnet, Hosts List, AES encryption, event-driven programmable e-mail notification, MDI/MDI-X auto-crossover  Extremely easy to set up and begin operating
Mechanical dimensions	3(W) x 3.41(L) x 0.625(H) inches
Means of connecting to the Tiamis-800 transceiver	Uses five #2 hardware screws with aluminum standoffs (supplied with the interface board).
Operating voltage range	4.5...25 VDC
Operating temperature range	-35 ... + 80 deg C
Humidity	Up to 90%, non-condensing

**LEXYCOM TECHNOLOGIES, INC**

Phone (303) 774-7822  
E-mail: [info@lexycominc.com](mailto:info@lexycominc.com)  
[www.lexycominc.com](http://www.lexycominc.com)

*Where any application finds its wireless solution*



## OPTION 1200

### FOR ETHERNET INTERFACES



**Option 1200 - Ethernet and diagnostics port interface board**



**Tiamis-800 transceiver with Option 1200 - interface board**

- **10/100Base-T Ethernet Bridge; protocol transparent functionality**
- **Supports Auto-crossover, Full- or Half-duplex**
- **Supports the Lexycom proprietary “Intelligent Interface Type Recognition” protocol**
- **Supports Setup/Diagnostics mode and the “Firmware Banks Exchange” algorithm**
- **User Interchangeable**
- **Attaches/piggybacks to the Tiamis-800**
- **Equipped with the push-button setup switch**
- **Sold separately or as a complete assembly with the Tiamis-800 transceiver**

### INTERFACE OPTIONS

- **Option 1200 - Ethernet Interface, single channel, for use with board level product**
- **Option 12E0 - Ethernet Interface, single channel, for use with enclosure product**

**LEXYCOM TECHNOLOGIES, INC**

Phone (303) 774-7822  
E-mail: [info@lexycominc.com](mailto:info@lexycominc.com)  
[www.lexycominc.com](http://www.lexycominc.com)

*Where any application finds its wireless solution*

# OPTION 1200



## CHARACTERISTICS

Data interface supported	10Base-T, 100Base-TX, and 100Base-T
Connectors	RJ45 for Ethernet port, DB-9 for diagnostics port Power - 4 pin, 0.1" spacing straight connector
Setup/Diagnostics support	Dedicated diagnostics port
Firmware Banks exchange protocol support	Yes
Support of the "Intelligent Interface Type Recognition" protocol	Yes
Additional functions	Equipped with Link, Full/Half-duplex, Speed, and Collision LEDs  Supports MDI/MDI-X auto-crossover  Extremely easy to setup and begin operating. Requires almost no programming or user interaction—auto negotiates speed, full/half duplex.
Mechanical dimensions	3(W) x 3.41(L) x 0.625(H) inches
Means of connecting to the Tiamis-800 transceiver	Uses five #2 hardware screws with aluminum standoffs (supplied with the interface board).
Operating voltage range	4.5...25 VDC
Operating temperature range	-35 ... + 80 deg C
Humidity	Up to 90%, non-condensing

**LEXYCOM TECHNOLOGIES, INC**

Phone (303) 774-7822  
E-mail: [info@lexycominc.com](mailto:info@lexycominc.com)  
[www.lexycominc.com](http://www.lexycominc.com)

*Where any application finds its wireless solution*



# ENCLOSURES

## FOR SERIAL



***Tiamis-800 software defined radio transceiver in the enclosure when equipped with any serial data enclosure option.***

- **Extruded Aluminum enclosure with open plastic bezels and aluminum end plates**
- **Easy access slide off top cover**
- **Interchangeable front panel**
- **Single or dual data ports**
- **Equipped with toggle reset switch**
- **Enclosure design accommodates interface options RS232, RS422, RS485**
- **Compact; 6.30" x 4.06" x 1.20"**



***Tiamis-800 software defined radio transceiver in the enclosure when equipped with Option 11E8. Ethernet/Serial server.***

## RELATED PRODUCTS

- **Interchangeable data interface board**
- **Serial data options: Option 11E0, 11E4, 11E2, 11E6, 11E3, or 11E7**
- **Interchangeable front panel**
- **Board level products**
- **Antennas**
- **Cables**

# LEXYCOM TECHNOLOGIES, INC

Phone (303) 774-7822  
E-mail: info@lexycominc.com  
www.lexycominc.com

*Where any application finds its wireless solution*

## ENCLOSURES

### FOR ETHERNET



**Allows the user to view, modify, and store Tiamis-800/Telion-1300 transceiver settings**

**Allows the user to save the settings from the transceiver into a file or load the settings from a previously stored file into the transceiver**

**Allows the user to select the operating transceiver's firmware from the list of pre-stored programs**

**Allows quick and easy mass-programming of transceivers for large scale systems**

**User-friendly graphical interface (Windows operating system compatible)**

**Allows the user to restore the factory default settings**

**Supplied by Lexycom with every transceiver purchase free of charge. The new releases are fully back compatible**



***Tiamis-800 software defined radio transceiver in the enclosure when equipped with Option 12E0***

## NEMA ENCLOSURE KITS

- **Nema kits provide protection in harsh environments**
- **Non-conductive, impact resistant, UV resistant**
- **Enclosure door can be padlocked for added security**
- **Easy installation**
- **Enclosure kit only radios are ordered separately**



**LEXYCOM TECHNOLOGIES, INC**

Phone (303) 774-7822  
E-mail: [info@lexycominc.com](mailto:info@lexycominc.com)  
[www.lexycominc.com](http://www.lexycominc.com)

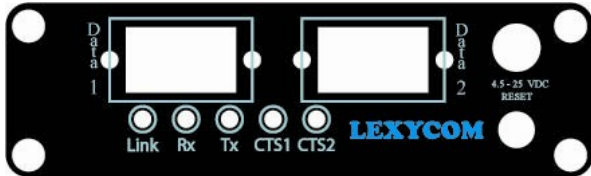
***Where any application finds its wireless solution***



# FRONT PANELS

Front Panel Options for use with the Tiamis-800 series transceivers enclosure models. Front panels available for use with the interchangeable interface board enclosure product.

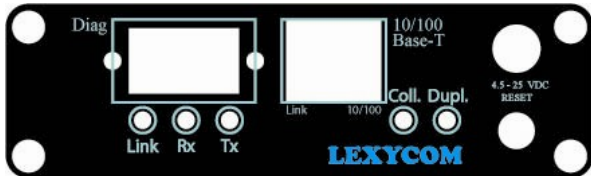
## SERIAL



ORDER OPTION: FP1100 for RS232, FP1102 for RS422 and FP1103 for RS485.

Includes all front panel hardware for the Tiamis-800 series transceiver.

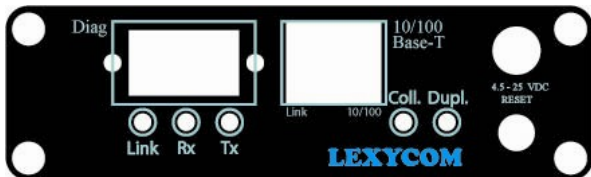
## ETHERNET / SERIAL SERVER



ORDER OPTION: FP1108 for Ethernet/Serial Server

Includes all front panel hardware for the Tiamis-800 series transceiver.

## ETHERNET



ORDER OPTION: FP1200 for Ethernet

Includes all front panel hardware for the Tiamis-800 series transceiver.

# LEXYCOM TECHNOLOGIES, INC

Phone (303) 774-7822  
E-mail: info@lexycominc.com  
www.lexycominc.com

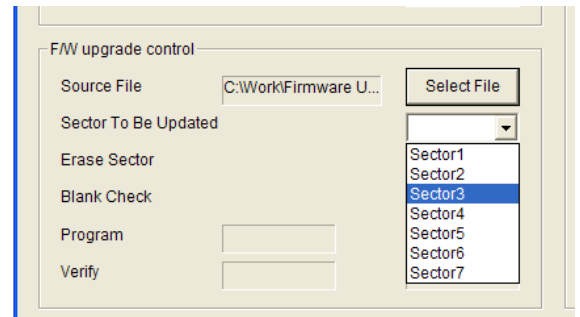
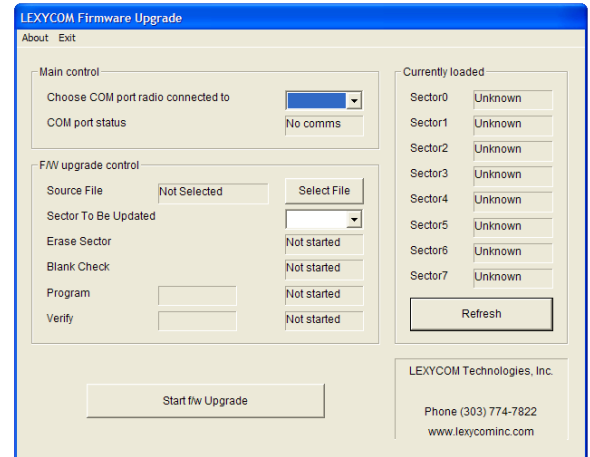
*Where any application finds its wireless solution*

# FIRMWARE UPGRADE PROGRAM

## FOR ALL MODELS



- **Allows the user to view, erase, and upload up to 7 different firmware source codes into the Tiamis-800 transceiver's internal Flash memory**
- **Allows the user to view, erase, and upload up to 9 different firmware source codes into the Telion-1300 transceiver's internal Flash memory**
- **Provides simple and intuitive user graphical interfaces (Windows operating system compatible)**
- **Supplied by Lexycom with every Tiamis-800 transceiver purchase free of charge. The new releases are fully back compatible**
- **Starting with version 2.0, allows upgrade of the Boot sector on the radio**



## RELATED PRODUCTS

- **Tiamis-800, Telion-1300 SDR transceivers**
- **Lexycom Configuration Program**

**LEXYCOM TECHNOLOGIES, INC**

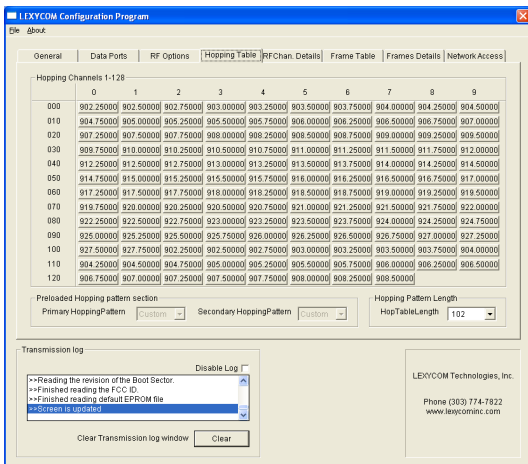
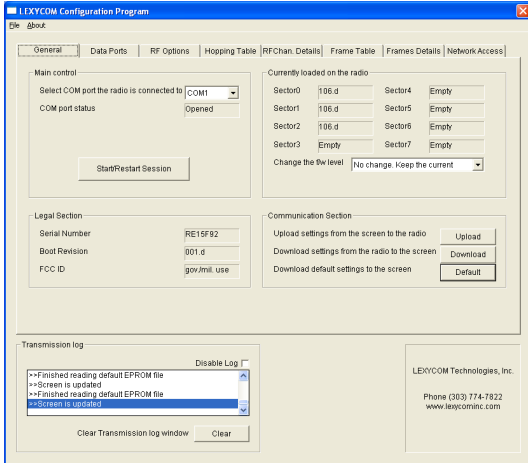
Phone (303) 774-7822  
E-mail: info@lexycominc.com  
www.lexycominc.com

*Where any application finds its wireless solution*



# LEXNET NETWORK DIAGNOSTICS PROGRAM

## FOR SERIAL INTERFACES



- **LEXNet network management software is included with all radios using serial interfaces**
- **LEXNet software allows for quick and easy network set up, management, maintenance, and troubleshooting**
- **Users are able to view, modify, and save the settings of all radios in the network remotely**
- **Data for individual radios in a network or for a complete network can be logged for a specified timeframe and then stored into a file for review**
- **LEXNet software can be run from any radio in the network ( the user is not required to be at the Master site)**
- **The Windows-based software is very intuitive with an easy to use interface**
- **On board electronic help file documentation**

## RELATED PRODUCTS

- **Tiamis-800 software defined radio transceiver**
- **Lexycom Firmware Upgrade program and Configuration software**

**LEXYCOM TECHNOLOGIES, INC**

Phone (303) 774-7822  
 E-mail: info@lexycominc.com  
 www.lexycominc.com

*Where any application finds its wireless solution*

# LEXNET NETWORK DIAGNOSTICS PROGRAM



## CHARACTERISTICS

### System requirements:

- **Windows 95 or later**
- **Requires less than 3 Mb of hard drive (includes Help file with documentation)**
- **When running, allocates less than 6 Mb of RAM**
- **Requires one of the COM ports on the computer**

**LEXNet diagnostics is designed to operate over a point-to-point, point-to-multi-point or a TDMA network.**

**The software provides a setup file, which automatically configures the user's computer for proper software installation.**

**The LEXNet diagnostics software is free-of-charge and can be obtained from Lexycom's technical support staff.**

**LEXYCOM TECHNOLOGIES, INC**

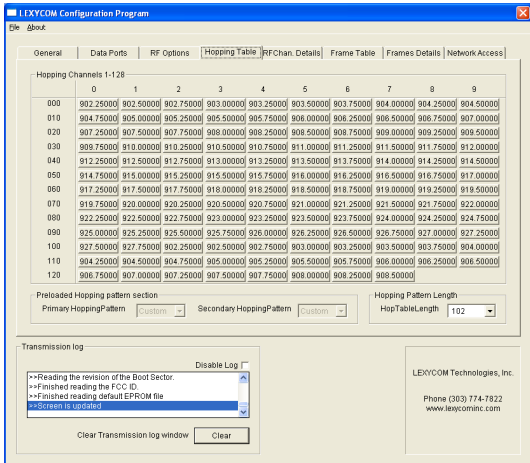
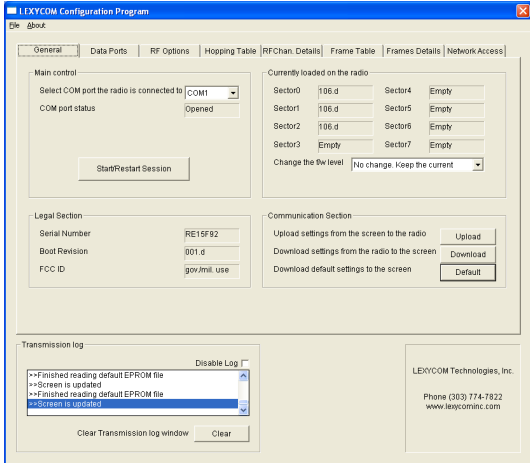
Phone (303) 774-7822  
E-mail: [info@lexycominc.com](mailto:info@lexycominc.com)  
[www.lexycominc.com](http://www.lexycominc.com)

*Where any application finds its wireless solution*



# CONFIGURATION PROGRAM

## FOR SERIAL INTERFACES



- **Allows the user to view, modify, and store Tiamis-800/ Telion-1300 transceiver settings**
- **Allows the user to save the settings from the transceiver into a file or load the settings from a previously stored file into the transceiver**
- **Allows the user to select the operating transceiver's firmware from the list of pre-stored programs**
- **Allows quick and easy mass-programming of transceivers for large scale systems**
- **User-friendly graphical interface (Windows operating system compatible)**
- **Allows the user to restore the factory default settings**
- **Supplied by Lexycom with every transceiver purchase free of charge. The new releases are fully back compatible**

## RELATED PRODUCTS

- **Tiamis-800, Telion-1300 SDR transceivers**
- **Lexycom Firmware Upgrade program**

# LEXYCOM TECHNOLOGIES, INC

Phone (303) 774-7822  
 E-mail: info@lexycominc.com  
 www.lexycominc.com

*Where any application finds its wireless solution*

## R F C A B L E S



## R F C A B L E S

### Cable LMR240 N-male to SMA-male connector

Cable length	Order Part Number
10 feet	FGCA0102NS
25 feet	FGCA0252NS
50 feet	FGCA0502NS
100 feet	FGCA1002NS

### Cable LMR400 N-male to SMA-male connector

Cable length	Order Part Number
10 feet	FGCA0104NS
25 feet	FGCA0254NS
50 feet	FGCA0504NS
100 feet	FGCA1004NS

**Please call for additional lengths and connector types.**

**Note: Cable loss will impact performance. Lexycom Technologies uses a low loss cable designed for wireless applications. Please contact us for additional information.**

## R E L A T E D P R O D U C T S

- **Tiamis-800, Telion-1300 SDR transceivers**
- **Directional and omnidirectional antennas**

**LEXYCOM TECHNOLOGIES, INC**

Phone (303) 774-7822  
E-mail: [info@lexycominc.com](mailto:info@lexycominc.com)  
[www.lexycominc.com](http://www.lexycominc.com)

*Where any application finds its wireless solution*



## DATA & POWER CABLES

### DATA CABLES



**RS232 DATA CABLES DB9M/DB9F; 6 foot length, shielded**

**ORDER PART NUMBER: FGCA2090AA**

### POWER CABLES



**POWER CABLE ADAPTOR 6 feet long, one end has a 2.1 mm center pin diameter round power connector**

**ORDER PART NUMBER: FGCA0210KA**



**4PIN POWER CABLE** Four wire power cable (wires are color coded). Provides power and reset function support for the Tiamis-800 transceiver when used with one of the interface boards manufactured by Lexycom

**ORDER PART NUMBER: ASCA0024AA**

### POWER ADAPTOR



**WALL ADAPTOR**

**AC-DC power wall adaptor, 800mA, 12V**

**ORDER PART NUMBER: FGAN0800MA**

**LEXYCOM TECHNOLOGIES, INC**

Phone (303) 774-7822  
E-mail: [info@lexycominc.com](mailto:info@lexycominc.com)  
[www.lexycominc.com](http://www.lexycominc.com)

*Where any application finds its wireless solution*

# ANTENNAS

## DIRECTIONAL



**6 Element Directional YAGI (10 dB gain)**

**902-928 MHz (Enviro-Seal)**

**ORDER PART NUMBER: FGAN0906YE**

**Termination: Pigtail, N Female, Boom length 2.0 ft**

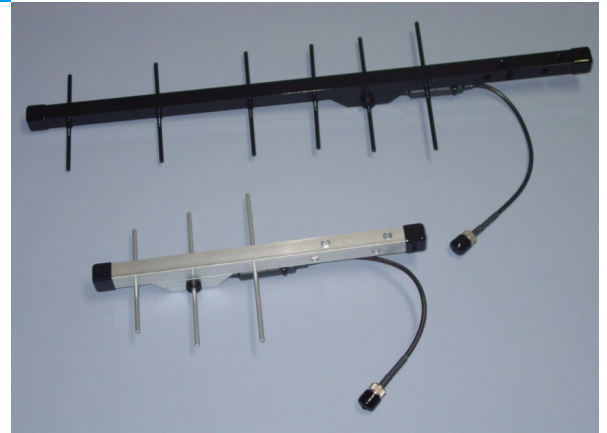
**3 Element Directional YAGI (6 dB gain)**

**902-928 MHz**

**ORDER PART NUMBER: FGAN0903YS**

**Termination: Pigtail, N Female, Boom length 1.1 ft**

**All Antennas include mounting hardware**



**LEXYCOM TECHNOLOGIES, INC**

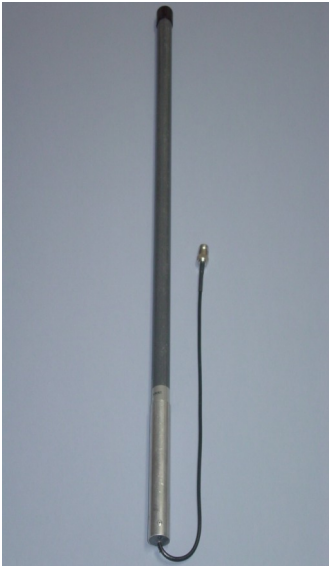
Phone (303) 774-7822  
E-mail: [info@lexycominc.com](mailto:info@lexycominc.com)  
[www.lexycominc.com](http://www.lexycominc.com)

*Where any application finds its wireless solution*



# ANTENNAS

## OMNIDIRECTIONAL



**5 dB OMNIDIRECTIONAL Antenna**

**902-928 MHz**

**ORDER PART NUMBER: FGAN09050S**

**Termination: Pigtail, N Female, Overall length 30 inches**

**Base to mast mounting hardware is included**

## PORTABLE



**1/2 WAVE PORTABLE Antenna**

**902-928 MHz, SMA Male**

**ORDER PART NUMBER: FGAN0900PS**

**DIPOLE Right Angle PORTABLE Antenna**

**890-960 MHz, SMA Male**

**ORDER PART NUMBER: FGAN0900PD**

**1/2 WAVE Right Angle/Swivel PORTABLE Antenna**

**902-928 MHz, SMA Male**

**ORDER PART NUMBER: FGAN0900PA**

# LEXYCOM TECHNOLOGIES, INC

Phone (303) 774-7822  
E-mail: info@lexycominc.com  
www.lexycominc.com

*Where any application finds its wireless solution*

# DOCUMENTATION



**At the time of the initial product purchase all required documentation is supplied to the users at no charge. Electronic copies of all of the documents may also be obtained from [www.lexycominc.com](http://www.lexycominc.com) or via our technical support group.**

**To request a paper or CD copy of any of the documents listed in this catalog, please, contact Lexycom's sales department.**

## USER MANUALS

### **The Tiamis-800 transceiver User Manual**

**Paper Copy Part Number: DOUM0001AB**  
**Copy of the file on a CD Part Number: DOUM0001AC**

### **The Firmware Upgrade program User Manual**

**Paper Copy Part Number: DOFW0107MB**  
**Copy of the file on a CD Part Number: DOFW0107MC**

### **The Configuration Program User Manual**

**Paper Copy Part Number: DOSW0114MB**  
**Copy of the file on a CD Part Number: DOSW0114MC**

### **The Telion-1300 Documentation**

**User Manual: DOSW0102TC**  
**Operating and Maintenance Manual**  
**Mechanical Drawings**  
**MTBF Calculation for Missile Flight&Launch Conditions**



**LEXYCOM TECHNOLOGIES, INC**

Phone (303) 774-7822  
E-mail: [info@lexycominc.com](mailto:info@lexycominc.com)  
[www.lexycominc.com](http://www.lexycominc.com)

*Where any application finds its wireless solution*